

Memorandum

To: David Jaffe
From: Kelly Wilkinson
Date: 7/12/2017
Re: 2675 Mercer Way - Arborist Report - Revision

Dear Mr. Jaffe,

The most recent Arborist Report for this site was written on 8/16/2016. This memo is to address the 7/7/2017 comments from the City of Mercer Island.

The City of Mercer Island is requesting the retention of tree #156, a mature Douglas fir tree. I have reviewed the site plans. Douglas fir is quite tolerant of some root loss and disturbance so long as the impact is kept to acceptable levels. The estimated total loss of root mass is estimated at less than 15% which is within the tolerable threshold. The continued retention of the subject tree is appropriate. I've adjusted the limits of disturbance for tree #156 to allow for the successful retention of this tree.

Drip-Line / Limits of Disturbance (feet)			
North	South	East	West
23 / 25	27 / 16	22 / 16	20 / 25

The plan is appropriate to preserve the subject trees in a viable condition; however, care will need to be taken when working near trees to avoid unnecessarily damaging roots. We can be available to assist in tree protection efforts when working near retained trees, particularly tree #156. If work is carried out diligently, all proposed retained trees are expected to remain viable.

I've attached a Tree Protection Map showing the drip-lines, limits of disturbance and locations of tree protection fencing.

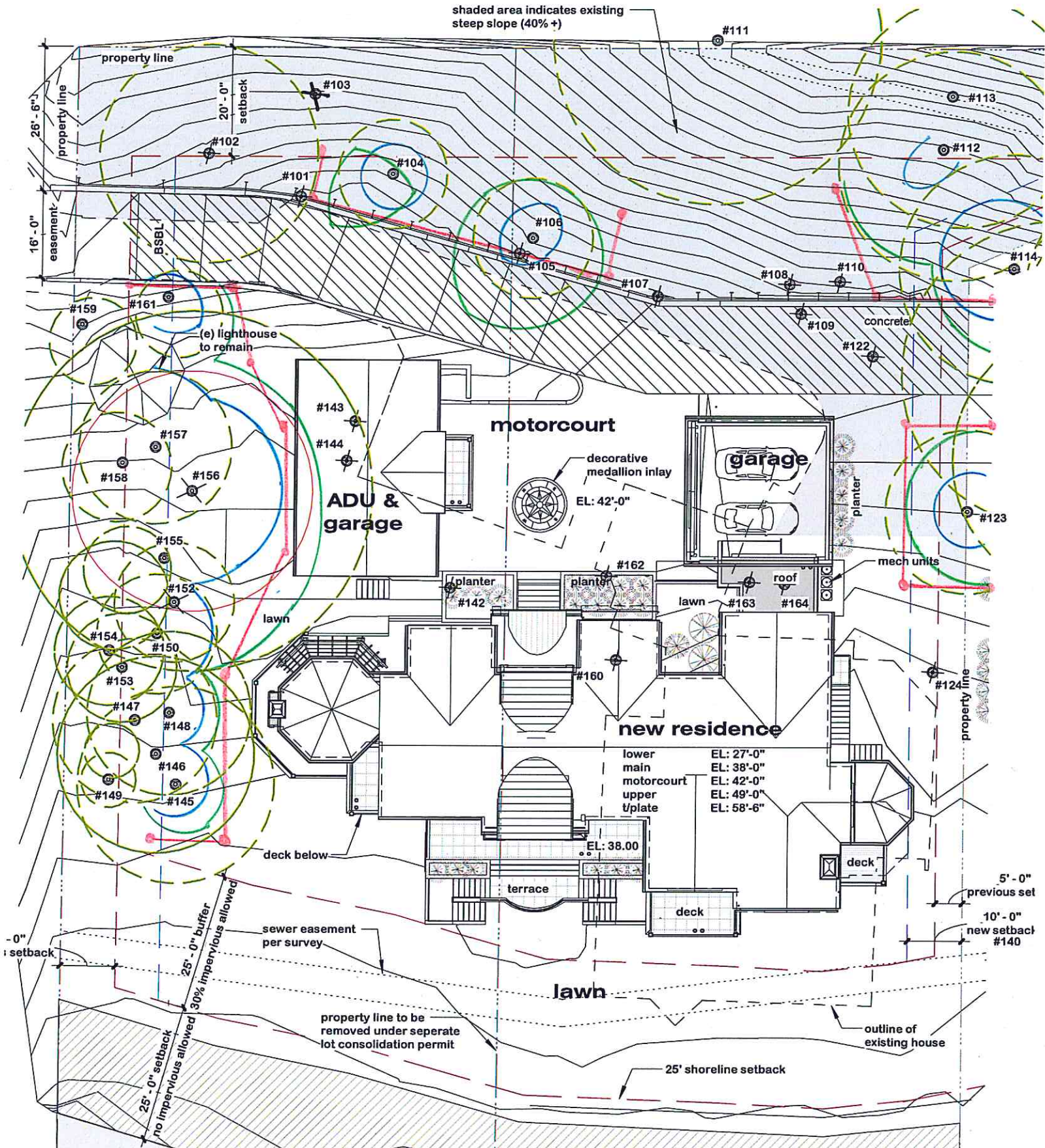
Please call if you have any questions or need further assistance on this project.

Sincerely,



Kelly Wilkinson
kelly.wilkinson@afmforest.com
ISA Certified Arborist #PN-7673A
ISA Tree Risk Assessment Qualified

TREE PROTECTION MAP



--- DRIP LINE
 --- LIMITS OF DISTURBANCE
 --- TREE PROTECTION FENCING
 APPROXIMATE SCALE: 1" = 23'